

DYNAMIC FLUCTUATION OF SPINAL NEURAL FORAMEN STENOSIS

The recumbent image (3A) shows the configuration of the spinal neural foramina at rest. There is minor narrowing of the L5/S1 neural foramina. The upright-extension image (3B) reveals relative minor narrowing of the neural foramina at all levels, especially at L5/S1 (arrow). The upright-flexion image (3C) demonstrates comparative generalized widening of the neural foramina at all levels.

Case courtesy of Melville MRI, P.C.



3A - Recumbent



3B - Upright Extension

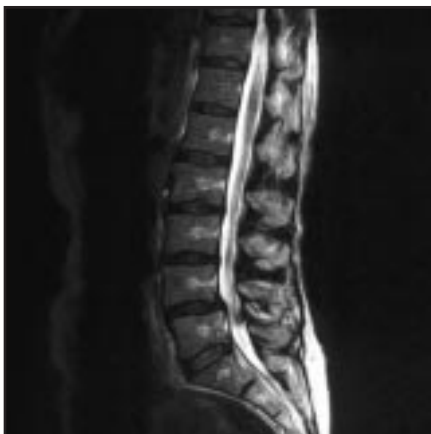


3C - Upright Flexion

LIGAMENTOUS RUPTURE ASSOCIATED WITH HYPERMOBILE ANTEROLISTHESIS

Minor anterolisthesis at L4/5 is noted in the recumbent view (4A). The upright flexion scan (4B) shows hyperexpansion of the L4/5 interspinous space indicating interspinous ligamentous rupture at the L4/5 level (arrow). Also note the increased anterolisthesis at L4/5 upon flexion consistent with hypermobile intersegmental spinal instability at this level.

Case courtesy of F. W. Smith, MD, University of Aberdeen, Scotland



4A - Recumbent



4B - Upright Flexion